

MarkingMate Laser Marking Software

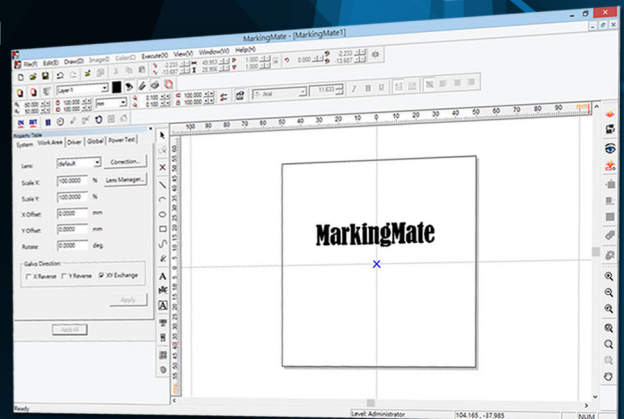
High Quality Solution for Multiple Marking Requests

Intro

MarkingMate is a window-based laser marking software with user-friendly interface. It supports various vector and bitmap graphics, and provides library and OCX components for system integrators. Featuring marking on plane surface, it has the most compatibility over PCI or USB marking controllers and laser models.

Features

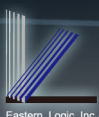
- Support Chinese (Traditional/ Simplified) / English / Japanese / German / Polish / Turkish interface.
- Support various input sources of Auto Text for Text and Barcode, e.g. Serial no., Imported file, Date, Com Port.
- Support a variety of graphic object. image, barcode and serial number.
- Support various imported vector and bitmap graphic formats.
- Provide object-oriented marking parameter table to easily set favorite parameters.
- Provide marking parameter table to accumulate marking experience.
- Support RS232C / TCP/IP external command.
- Support variety kinds of lens calibration: formula-method, scale-method, and grid-method.
- Support Win XP / Vista / 7 / 8 platform.



Optional Modules

- Library (DLL / OCX)
- Rotary Marking
- XYZ Table Positioning Marking
- Mark On Fly
- Graphic Auto/Manual split function
- Lens Calibration (OCX)
- Multiple Head Marking System, including single, dual or multiple beam source support.
- Computer Vision Positioning Marking
- 2.5D Marking System
- Power Compensation Function
- Multi Laser Marking System. Support multiple markers controlled by one terminal.

We reserve the right to alter, edit or remove any function, in whole or in part, at our sole discretion.



興誠科技股份有限公司 Eastern Logic Inc.

Address: 7F-4., No.75, Sec. 1, Xintai 5th Rd., Xizhi Dist., New Taipei City 221, Taiwan

TEL : +886-2-2698296 FAX : +886-2-26983066 E-Mail : service@elogic.com.tw